

# Ceiling Tiles

## Featuring QuietPrint™

### 12mm | ½”

Acoufelt ceiling tiles have strong acoustic properties and achieve a minimum Noise Reduction Coefficient (NRC) of 0.85. Tiles are available for print in a wide variety of designs with custom printing options available. Custom sizing is also available on request.

#### QuietPrint™ eliminates the compromise between acoustics and aesthetics.

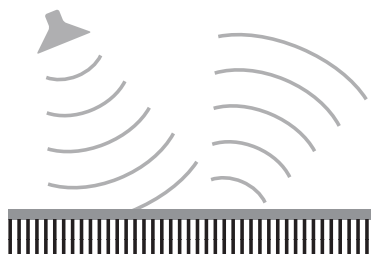
When printing on acoustic material, there is often a trade-off between acoustic performance and printing resolution.

QuietPrint™ applies print technology that colors the fiber with high precision, whilst ensuring air-gaps in the porous material remain open to absorbing noise. The net result is a printing technique that is high resolution, that has no significant impact on the acoustic performance of the base material.

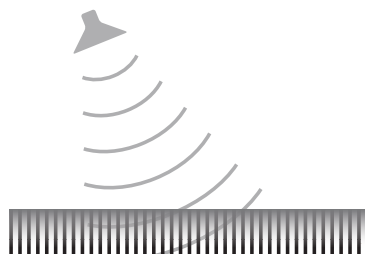
To learn more visit [acoufelt.com/quietprint](https://acoufelt.com/quietprint)

#### Key features of the Acoufelt ceiling tiles featuring QuietPrint™ include:

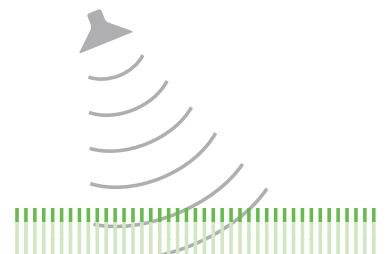
-  Printing method has no substantial impact on acoustic performance
-  Superior breathability
-  Excellent resistance to fire
-  Super fine fibers to achieve a smooth surface appearance
-  Thermal efficiency
-  Anti-static treated – reducing dust cling
-  Certified low VOC
-  10 year lightfastness warranty
-  3M Scotchgard protection
-  Highly customizable



Some printing techniques create an impenetrable layer that **REFLECTS** sound



Some printing techniques allow the ink to 'run' into the material, resulting in a **POOR RESOLUTION** image



Acoufelt QuietPrint™ colors the fibers with high precision, whilst ensuring air gaps remain open, **ABSORBING** sound and creating a **HIGH RESOLUTION** image

## Product Specifications

Application	For ceiling	
Material	100% Polyester fibers with more than 60% recycled content	
	<b>METRIC</b>	<b>IMPERIAL</b>
Weight	2400 g/m <sup>2</sup> +/- 10%	0.49 lb/ft <sup>2</sup> +/- 10%
Tile Size	595mm x 595mm	23.4" x 23.4"
	595mm x 1195mm	23.4" x 47"
	custom size available	
Thickness	12mm +/- 10%	0.47" +/- 10%

## Technical specifications

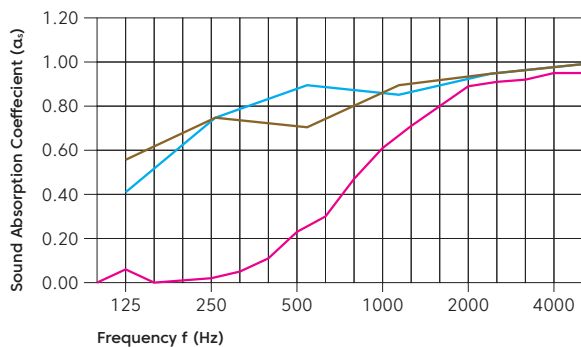
Fire Testing	ISO 9705: 1993 Group 1 AS ISO 9705: 2003 Group 1 ASTM E84-17a Class A
Indoor Air Quality	Low VOCs emission, formaldehyde and Phenol-free
Light Fastness	ISO 105-B02 1994, 6-7

## Environmental

Made from	>60% recycled PET content
-----------	---------------------------

## Acoustic Performance

Sound Absorption	NRC 0.45 (minimum)
ISO 354-2006	NRC 0.85 (200mm air gap) NRC 0.80 (400mm air gap)



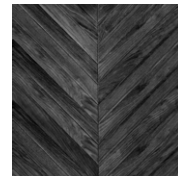
\*Graph not to scale.

Frequency (Hz)	125	250	500	1000	2000	4000	NRC
αs no air gap	0.06	0.02	0.23	0.61	0.89	0.95	0.45
αs 200mm air gap	0.40	0.75	0.90	0.85	0.95	1.00	0.85
αs 400mm air gap	0.55	0.75	0.70	0.90	0.95	1.00	0.80

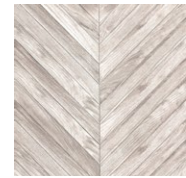
## Designs



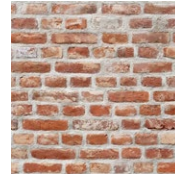
Chevron Timber Oak



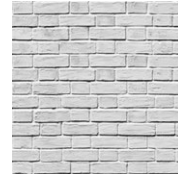
Chevron Timber Black



Chevron Timber Whitewashed



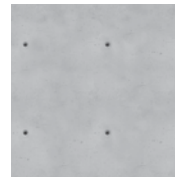
Masonry Brick Rustic Red



Masonry Brick White



Aesthetic Papercrush Tissue



Masonry Concrete Crater



Masonry Concrete Speckled



Masonry Concrete Stained

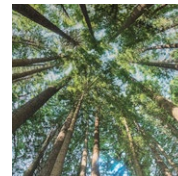
More designs available at [acoufelt.com](http://acoufelt.com)

## Custom

Provide us with your own image to be printed on our acoustic panels. Below are some examples of potential uses.



Logo



Nature photography



Themed photography



For further product information visit [acoufelt.com](http://acoufelt.com)

Specifications are based on average from normal manufacturing tolerances, such variations do not effect product performance. We reserve the right to improve the specification of the product without prior notice. Acoufelt strives to fulfil the needs of their customers by producing the highest quality felt products. However due to the fine, fibrous and textural nature of the product, slight visual imperfections may be seen when viewing the product from less than 1 to 1.5 meters. These slight visual imperfections however, are within normal industry manufacturing tolerances. When installing QuietPrint™, we recommend that you align the panels to their closest match at eye level, and allow for +/- 5mm Alignment Tolerance.